



**R1** MONUMENT DULUX, OR SIMILAR



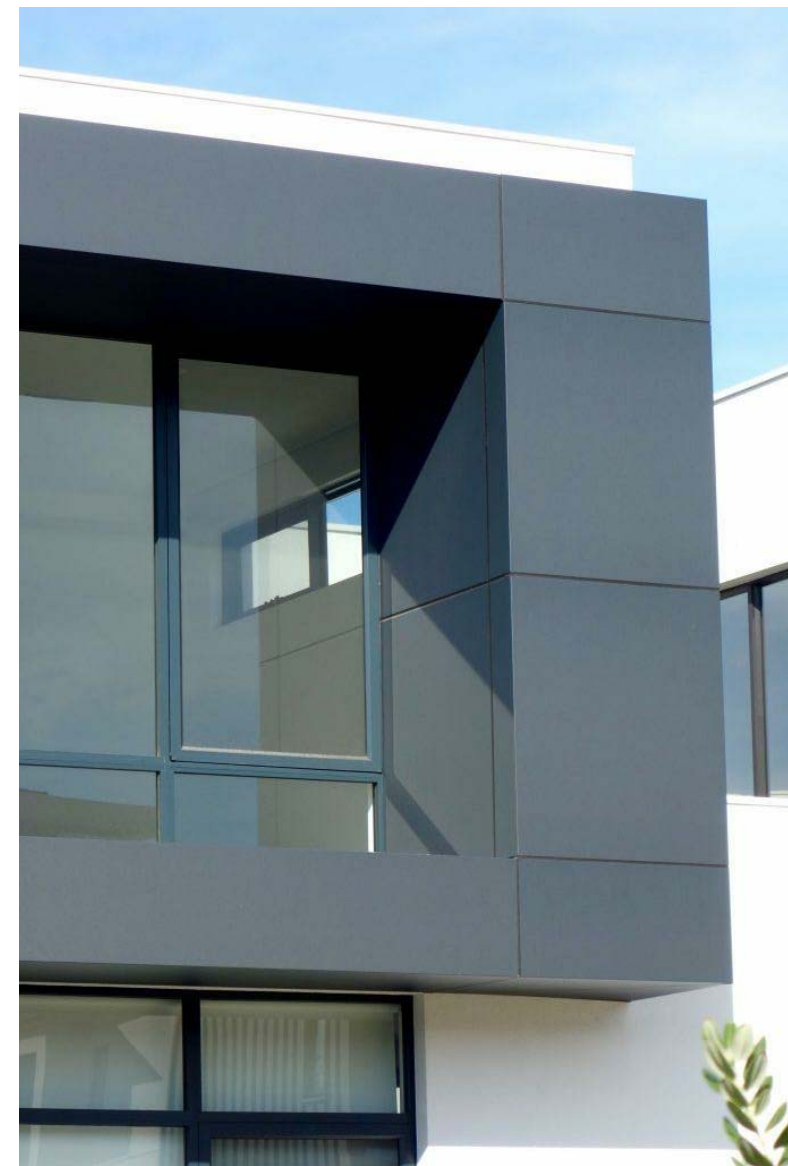
**R2** SHALE GREY DULUX, OR SIMILAR



**BK** PHG BRICKS - DARK & STORMY, LIGHTNING, OR SIMILAR



**T** ALUMINIUM TIMBER BATTENS, OR SIMILAR



**AL** ALUCOBOND MONUMENT CLADDING, OR SIMILAR



Level 1, 538 King Georges Rd,  
Beverly Hills NSW 2209  
ph: +61 2 8098 7886 fx: +61 2 8098 7886  
e: admin@zta.net.au  
ABN 56 164 632 517

**zta architects**

architecture / urban design / interior design

CONSULTANTS

NOTE

ISSUE    DATE    PURPOSE OF ISSUE

PROJECT  
**8-10 WENTWORTH ST,  
CROYDON PARK NSW 2133**

CLIENT  
-

STATUS  
**PRELIMINARY**

STAGE  
**DA**

DRAWING NO.  
**DA10**

SCALE  
**NTS**

DATE  
**10 MARCH 2022**

ISSUE  
**A**

JOB NO.  
**21435**

DRAWING TITLE  
**FINISHES SCHEDULE**

DRAWN BY  
**EB**

CHECKED BY  
**RZ**